

A stylized, handwritten signature in black ink, consisting of two main parts: a cursive 'R' followed by a cursive 'S'.

R O O S H A D S H R O F F

## EMBROIDERED DAY BED

C-SERIES

**Dimensions:** 9' length x 2' x 1' 5" ht, backrest 3' 9"

**Material:** Recycled old Burma teak wood with natural PU polish, no added colour, zardozi with cotton thread embroidery

**Edition:** Unique piece

**Year:** 2011

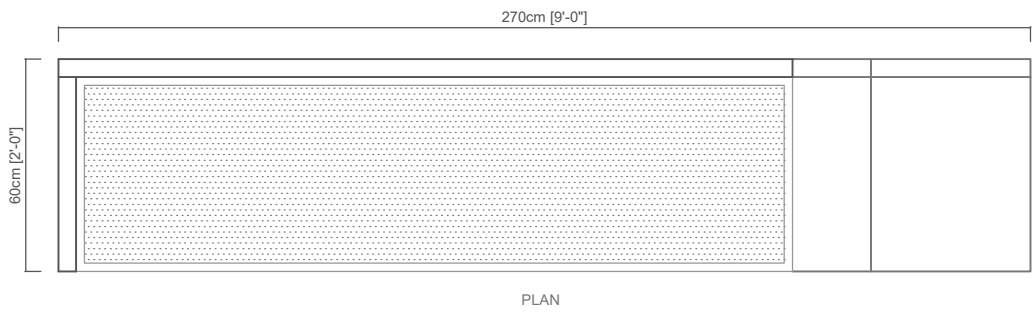
**Lead Time:** 60 Days

Customization of embroidery pattern and colour avail-

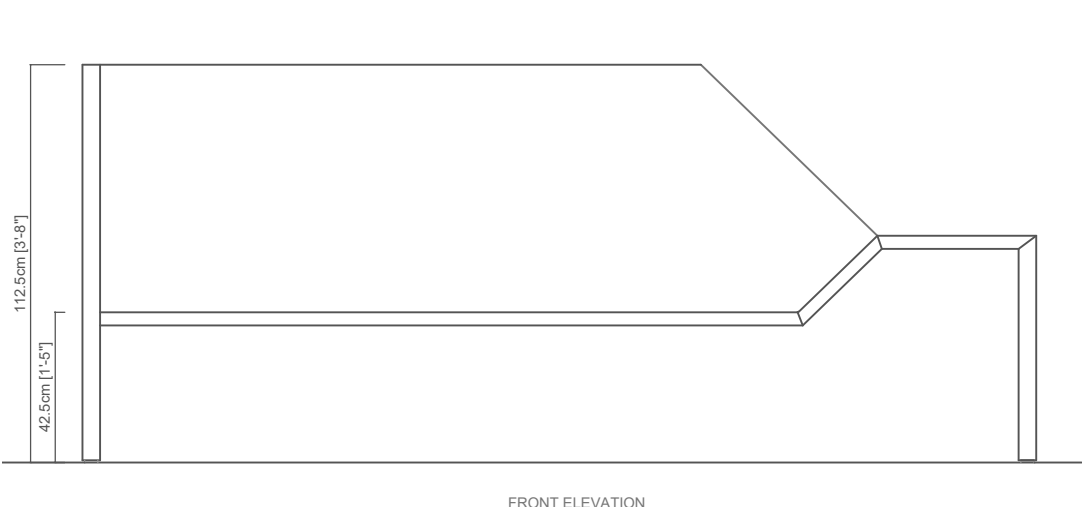
Blurring the boundaries between skin and structure, the Day bed re-defines traditional upholstery by enabling the embroidery to be an integral part of the wood. Handcrafted segments of wood make use of exquisite traditional joinery in recycled old Burma teak wood, thereby addressing issues of sustainability pertaining to both resources and craftsmen. A complete knockdown construction allows for the day bed to be disassembled with ease, thus facilitating easy transportation and re-assembly. The piece is signed with an inlay of hand-cut brass.

The embroidered panel consists of over 20,000 holes hand-drilled into the 2½" thick seating area at 1/8th" spacing, to allow for the seating area to be upholstered using zardozi hand embroidery based on French knotting techniques. The gridded base serves as a canvas, which allows for the imagery to be altered when desired.

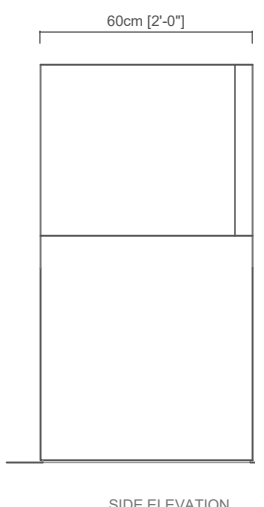




PLAN



FRONT ELEVATION



SIDE ELEVATION