

A stylized, handwritten signature in black ink, consisting of two main parts: a cursive 'R' followed by a series of loops and a final flourish.

R O O S H A D S H R O F F

## C-SIDE TABLE

C-SERIES

**Dimensions:** 2'x1' 6"x1' 4" ht.

**Material:** Recycled old Burma teak wood  
with natural PU polish, no added colour

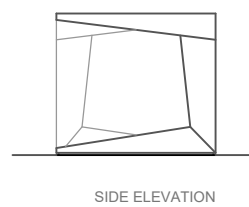
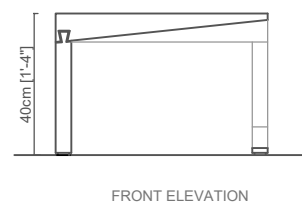
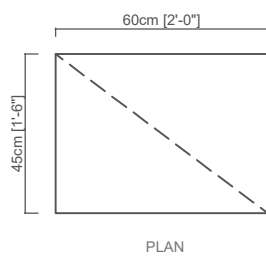
**Year:** 2017

**Lead Time:** 45 Days

**Finishes available:** Natural & Black

Part of the C-Series collection, the C-Side table pushes the boundaries of woodworking by taking on a cantilevered form. Devoid of screws, metal fasteners or power tools, the handcrafted individual segments make use of exquisite traditional joinery in recycled old Burma teak wood, thereby addressing issues of sustainability pertaining to both resources and craftsmen. Each piece is individually signed with an inlay of hand-cut brass. A complete knockdown construction allows for the chair to be disassembled with ease, thus facilitating easy transportation and re-assembly.





C SIDE TABLE

Recycled old burma teak wood with natural  
PU Polish, no added colour



C SIDE TABLE

Recycled old burma teak wood with open  
grain, water based PU polish

