

A stylized, black, cursive signature logo consisting of two main parts. The left part starts with a thick, curved stroke that loops back down and then continues as a wavy line. The right part is a more complex, looped flourish that ends with a thick, curved stroke.

R O O S H A D S H R O F F

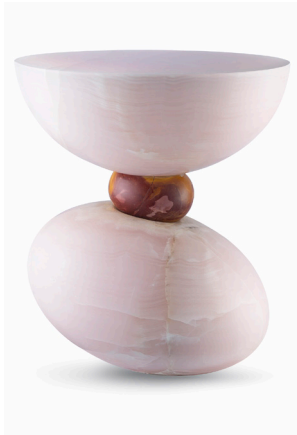
## SIDE TABLE 01

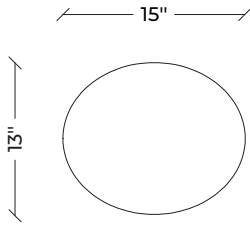
**Dimensions :** L 15" x W 13" x HT 18" | L 55 cm x W 50 cm x HT 45 cm

**Material :** Green onyx with white onyx center, pink onyx with a mookaite center and Cast white bronze with a lapis lazuli center.

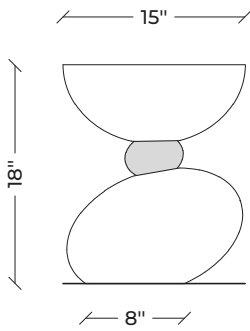
**Lead Time :** 120 Days

Representative of pebbles stacked atop each other on a natural landscape, this is the original object that went on to inspire the rest of the Balance line. The table presents twin ellipsoids hand- carved from singular blocks of onyx or cast in white bronze, the upper sliced horizontally to create a flat surface; a third ellipsoid rests between them, at its centre.

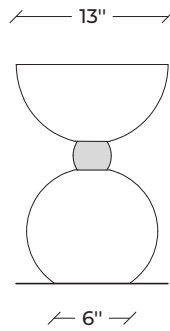




TOP VIEW



FRONT VIEW



SIDE VIEW